

# DRAFT 3-Board Edits

## WCPSS ENROLLMENT PLAN, 2019-20

### A MULTI-YEAR APPROACH TO GROWTH MANAGEMENT

Prepared by: Office of Student Assignment

Board of Education Work Session  
November 7, 2018

# Parkside Elementary



# New School – Parkside Elementary

- Year-Round Multi-Track Calendar
- Capacity: 834
- Traditional Application School: **Powell ES and Pleasant Grove ES (with neighborhood bus transportation)**
- Impacted Schools: Alston Ridge ES, Carpenter ES Cedar Fork ES, Mills Park ES, Morrisville ES

- **Current status:**

2017-18 Base School	Capacity	Capacity w/ Trailers	Calendar	Base %	2017-18 ADM	2017-18 Util	2017-18 Util w/ Trl
ALSTON RIDGE ES	914	914	Y	65%	1011	111%	111%
CARPENTER ES	612	652	Y	52%	818	134%	125%
CEDAR FORK ES	508	788	T	75%	1018	200%	129%
MILLS PARK ES	716	776	T	83%	954	133%	123%
MORRISVILLE ES	612	672	Y	87%	765	125%	114%

- Utilization based on 2018-19 Capacity and 2017-18 Month-2 Average Daily Membership (ADM)
- Y – Year-Round Calendar, All Tracks (1-4)
- Y4 – Year-Round Calendar, Track 4 Only
- T – Traditional Calendar
- Base % = Percentage of WCPSS students within base attending the base school
- Capacity does not include regional special education programs

# Green Level High School



# New School – Green Level High

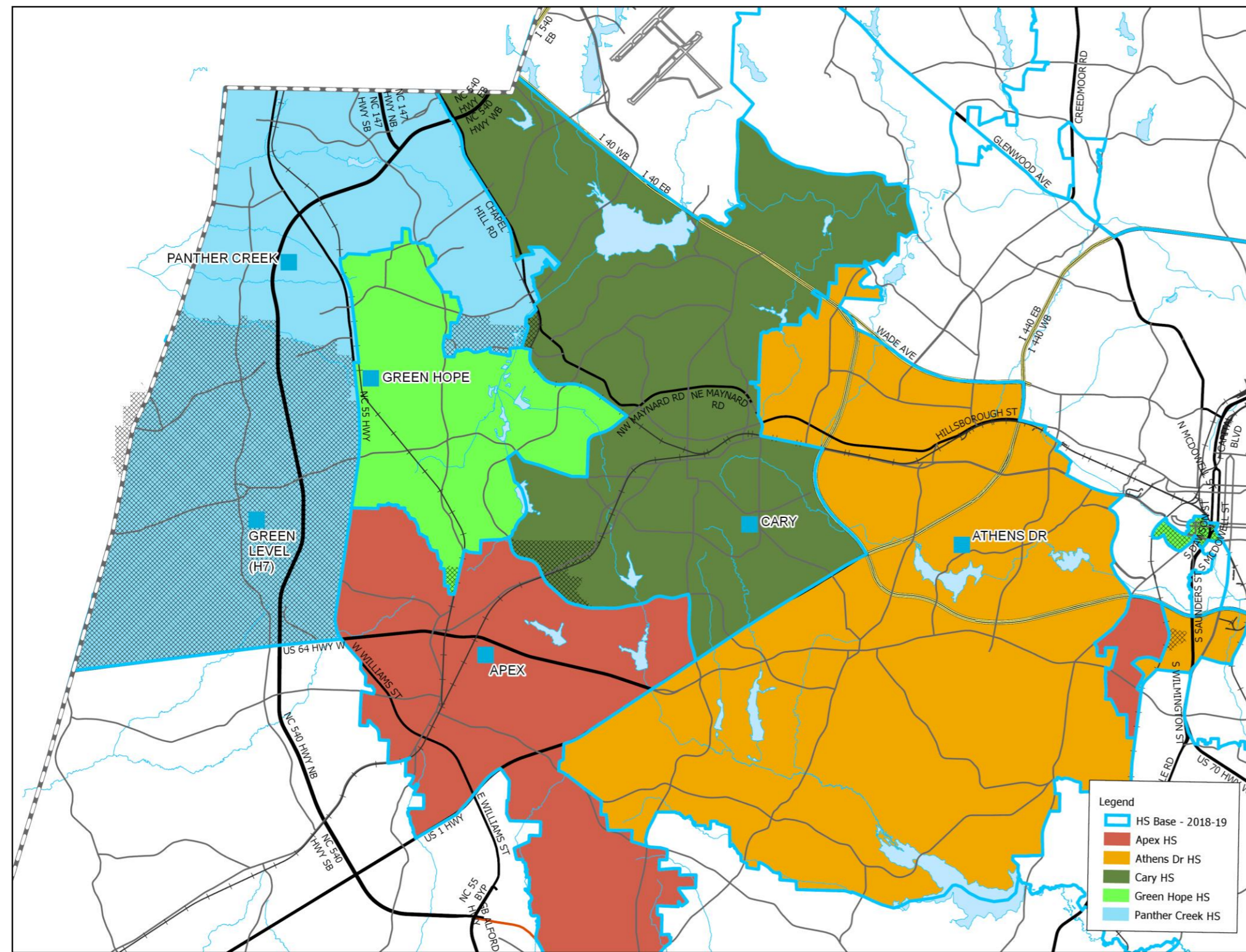
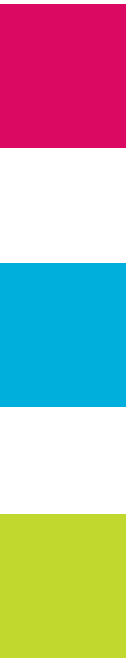
- Traditional Calendar
- Capacity: 2,266
- Opening with Grades 9-10
- Impacted Schools: Apex HS, Cary HS, Green Hope HS, Panther Creek HS
- Current status:

2017-18 Base School	Capacity	Capacity w/ Trailers	Calendar	Base %	2017-18 ADM	2017-18 Util	2017-18 Util w/ Trl
APEX HS	2222	2222	T	84%	2029	91%	91%
CARY HS	2222	2222	T	88%	2371	107%	107%
GREEN HOPE HS	1683	2571	T	94%	2921	174%	114%
PANTHER CREEK HS	1756	2548	T	73%	2708	154%	106%

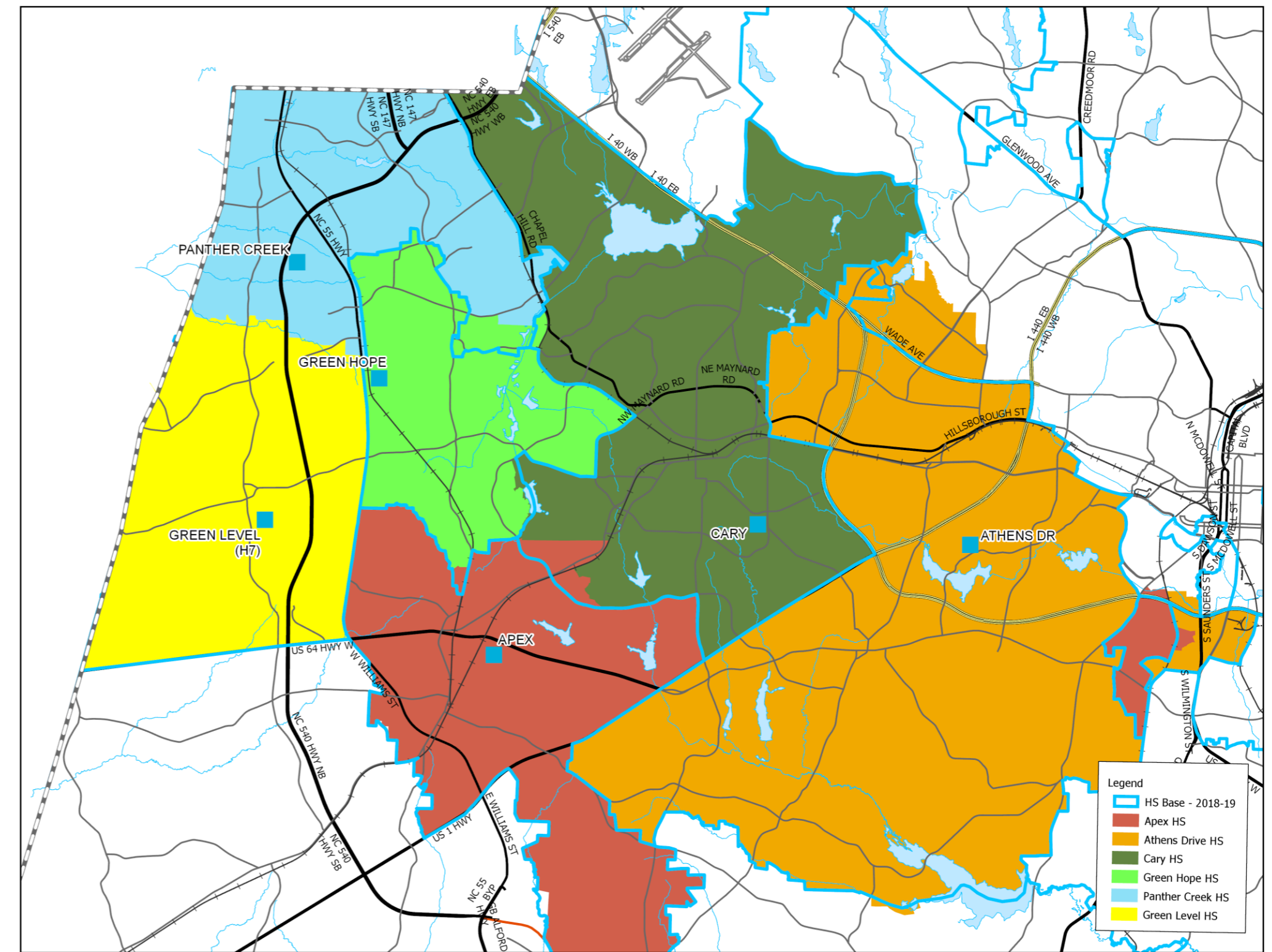
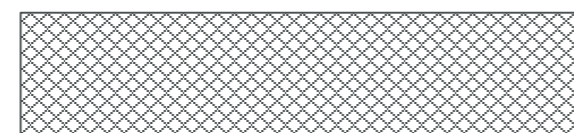
- Utilization based on 2018-19 Capacity and 2017-18 Month-2 Average Daily Membership (ADM)
  - Y – Year-Round Calendar, All Tracks (1-4)
  - Y4 – Year-Round Calendar, Track 4 Only
  - T – Traditional Calendar
  - Base % = Percentage of WCPSS students within base attending the base school
- Capacity does not include regional special education programs



# New School – Green Level High



Impacted Areas:



Proposed Base Areas

# New School – Green Level High

2017-18 Base School	Capacity	Capacity w/ Trailers	2019-20 Util	2019-20 Util w/ Trl	2021-22 Util	2021-22 Util w/ Trl	Res	Academic Proficiency (Grade 10)			Actual
								Base	Non-Base	Agg	
APEX HS	2222	2222	91%	91%	93%	93%	80%	78%	82%	78%	78%
CARY HS	2222	2222	103%	103%	106%	106%	74%	72%	64%	71%	69%
GREEN HOPE HS	1683	2571	153%	100%	143%	94%	92%	92%	86%	91%	88%
PANTHER CREEK HS	1756	2548	169%	117%	189%	130%	88%	88%	86%	88%	89%

2019-20 Base School	Capacity	Capacity w/ Trailers	2019-20 Util	2019-20 Util w/ Trl	2021-22 Util	2021-22 Util w/ Trl	Res	Academic Proficiency (Grade 10)		
								Base	Non-Base	Agg
APEX HS	2222	2222	93%	93%	96%	96%	79%	77%	82%	77%
CARY HS	2222	2222	100%	100%	102%	102%	74%	72%	64%	71%
GREEN HOPE HS	1683	2571	155%	101%	145%	95%	92%	91%	86%	91%
PANTHER CREEK HS	1756	2548	97%	67%	107%	74%	85%	85%	86%	85%
GREEN LEVEL HS (H7)	2266	2266	58%	58%	61%	61%	91%	92%	n/a	n/a

**PROFICIENCY LEGEND:**

*Res = Mean proficiency of students residing in base*

*Base = Mean proficiency of base students in base*

*Non-Base = Mean proficiency of non-base students*

*Agg = Aggregate mean proficiency of base and non-base students*

*Actual = Reading/English proficiency by school*

*Draft 1 membership forecast updated for Drafts 2 and 3 using 2018-19 WCPSS geocode  
Capacity does not include regional special education programs*



# Operational Efficiency

- a) Increase base attendance area for selected schools
- b) Address schools with enrollment caps
- c) Adjust calendar application areas for improved utilization and greater acceptance rate
- d) Review base assignments in downtown Raleigh and the surrounding area

# Operational Efficiency

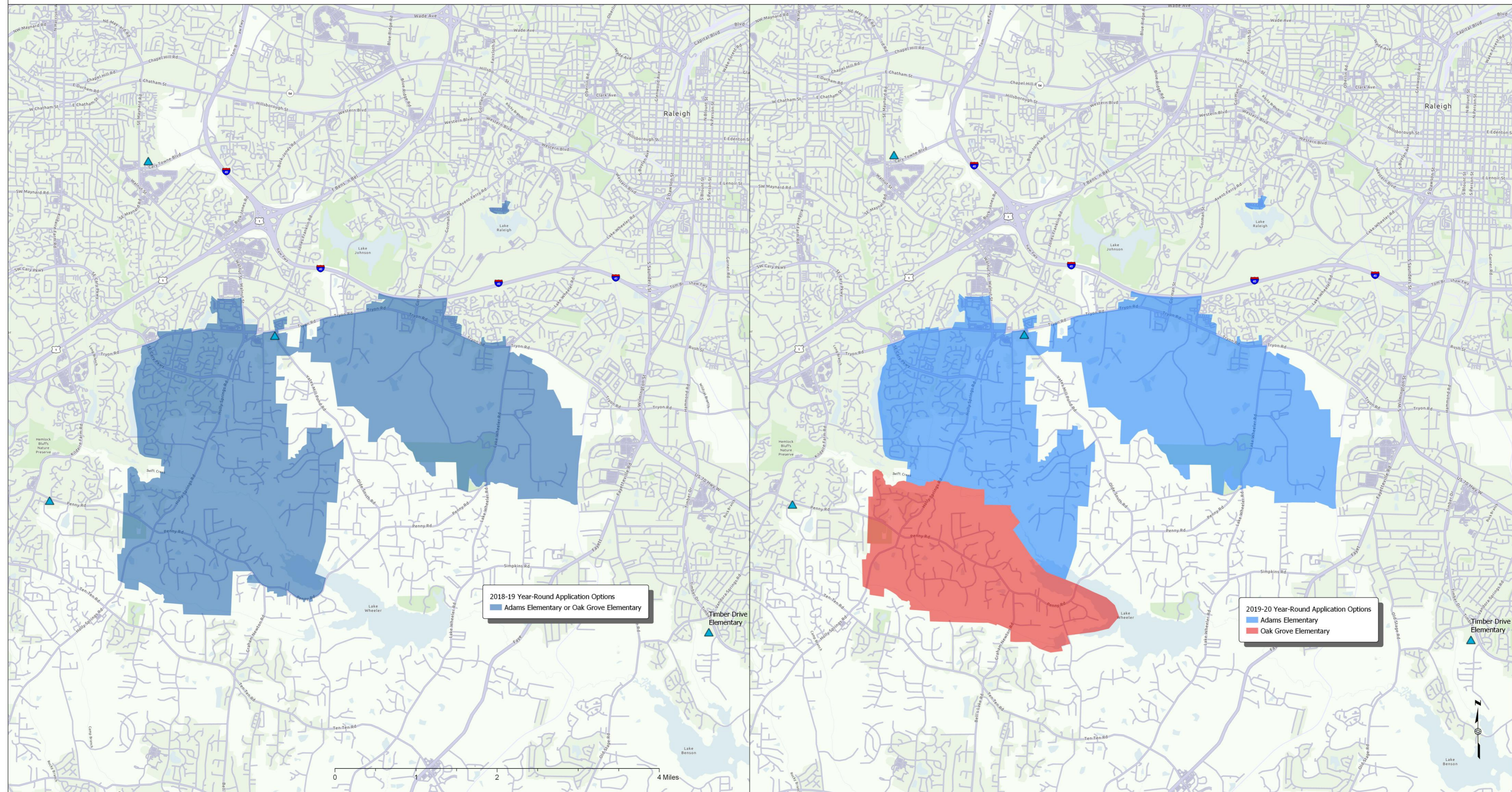
## c) Proposed Changes in Application Schools (Elementary)

Base School	Application School	Application School	Application School	Application School
Adams ES	Reedy Creek ES	Swift Creek ES		
Apex ES	Laurel Park ES	Adams ES	Oak Grove ES	
Briarcliff ES	Adams ES	Morrisville ES		
Cary ES	Adams ES	Morrisville ES		
Cedar Fork ES	Morrisville ES	Carpenter ES		
Davis Drive ES	Morrisville ES	Carpenter ES		Salem ES
Green Hope ES	Carpenter ES			Turner Creek ES
Kingswood ES	Adams ES	Morrisville ES		
Northwoods ES	Morrisville ES	Adams ES		
Penny Road ES	Oak Grove ES	Adams ES		
Reedy Creek ES	Adams ES	Carpenter ES		
Swift Creek ES	Adams ES*	Oak Grove ES*		Timber Drive ES*
Weatherstone ES	Morrisville ES	Adams ES		Salem ES
Yates Mill ES	Oak Grove ES*			Timber Drive ES*

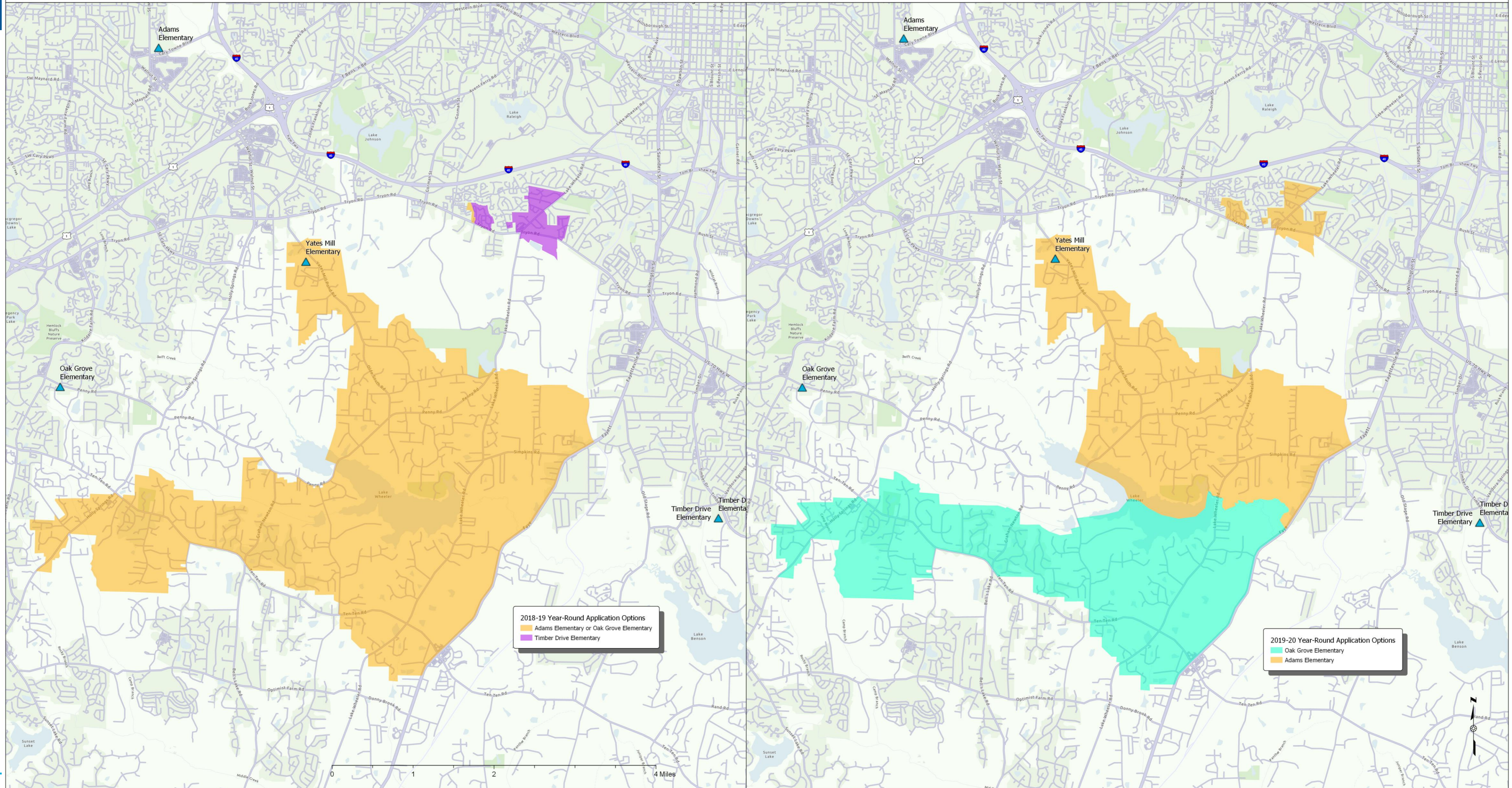
\* by catchment

\* by catchment

## Swift Creek Elementary Base Area Year-Round Application Schools 2018-19 vs. 2019-20 Draft 3 Proposal



# Yates Mill Elementary Base Area Year-Round Application Schools 2018-19 vs. 2019-20 Draft 3 Proposal:



# Operational Efficiency

## c) Proposed Changes in Application Schools (Elementary)

Base School	Application School	Application School	Application School	Application School
Adams ES	Reedy Creek ES	Swift Creek ES		
Apex ES	Laurel Park ES	Adams ES	Oak Grove ES	
Briarcliff ES	Adams ES	Morrisville ES		
Cary ES	Adams ES	Morrisville ES		
Cedar Fork ES	Morrisville ES	Carpenter ES		
Davis Drive ES	Morrisville ES	Carpenter ES		Salem ES
Green Hope ES	Carpenter ES			Turner Creek ES
Kingswood ES	Adams ES	Morrisville ES		
Northwoods ES	Morrisville ES	Adams ES		
Penny Road ES	Oak Grove ES	Adams ES		
Reedy Creek ES	Adams ES	Carpenter ES		
Swift Creek ES	Adams ES*	Oak Grove ES*		
Weatherstone ES	Morrisville ES	Adams ES		Salem ES
Yates Mill ES	Oak Grove ES*	Adams ES*		

\* by catchment

\* by catchment

# Operational Efficiency

## c) Proposed Changes in Application Schools (Middle)

Base School	Application School	Application School	Application School	Application School
Apex MS	Lufkin Road MS	East Cary MS		
Daniels MS	East Cary MS			Pine Hollow MS
Davis Drive MS	Salem MS	East Cary MS		
Dillard Drive MS	Lufkin Road MS*	East Cary MS	West Lake MS	North Garner MS*
East Cary MS	Lufkin Road MS*	Salem MS*		
Ligon MS	East Cary MS			North Garner MS
Lufkin Road MS	No changes to existing base			East Cary MS^
Martin MS	East Cary MS			Pine Hollow MS
Mills Park MS	Salem MS	East Cary MS		
Reedy Creek MS	East Cary MS			Lufkin Road MS
West Cary MS	East Cary MS	Lufkin Road MS*	Salem MS*	Pine Hollow MS*

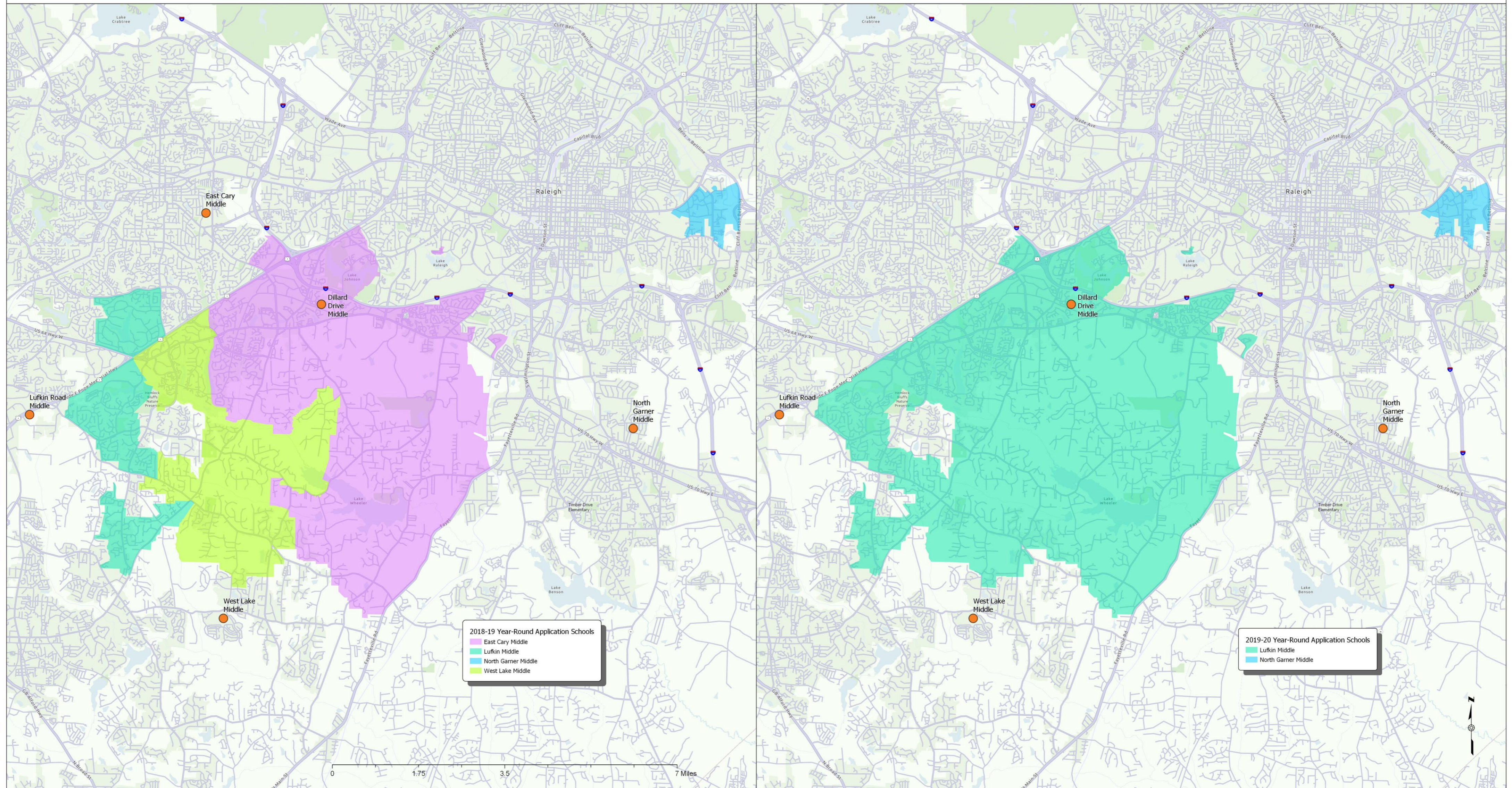
\* by catchment

\* by catchment

^ for new base only

\* by catchment

## Dillard Drive Middle Base Area Year-Round Application Schools 2018-19 vs. 2019-20 Draft 3 Proposal: Option 3



# Operational Efficiency

## c) Proposed Changes in Application Schools (Middle)

Base School	Application School	Application School	Application School	Application School
Apex MS	Lufkin Road MS	East Cary MS		
Daniels MS	East Cary MS			Pine Hollow MS
Davis Drive MS	Salem MS	East Cary MS		
Dillard Drive MS	Lufkin Road MS*	East Cary MS	West Lake MS	North Garner MS*
East Cary MS	Lufkin Road MS*	Salem MS*		
Ligon MS	East Cary MS			North Garner MS
Lufkin Road MS	No changes to existing base			East Cary MS^
Martin MS	East Cary MS			Pine Hollow MS
Mills Park MS	Salem MS	East Cary MS		
Reedy Creek MS	East Cary MS			Lufkin Road MS
West Cary MS	East Cary MS	Lufkin Road MS*	Salem MS*	Pine Hollow MS*

\* by catchment

\* by catchment

^ for new base only

\* by catchment



# Grandfathering

## Elementary School Students

- To utilize new school capacity and meet State mandated class-size reductions for grades K-3:
  - Elementary school students who experience an assignment change as a result of this enrollment proposal, and are rising into **grade 5**, are eligible to request a **transfer** to “grandfather” at their current assignment. These requests will be approved if submitted during the designated application period.
  - Grandfather requests can be made through the Grandfather Transfer process (**new in November/December**). Grandfathered students will **not receive district transportation**.
  - **Siblings of eligible grandfather students may grandfather for one year only, and then they will be assigned back to the base school for their address.**

# Grandfathering (cont.)

## Middle School Students

- To provide additional opportunities for middle school students:
  - From an **existing school to an existing school**, middle school students who experience an assignment change as a result of this enrollment proposal, and are rising into **grade 7 or grade 8**, are eligible to request a **transfer** to “grandfather” at their current assignment. These requests will be approved if submitted during the designated application period. Siblings may grandfather with no limit on the number of years they can attend the school.
  - From an **existing school to a new school**, students assigned to Alston Ridge Middle School will only be eligible to grandfather if they are rising into **grade 8**. Siblings may also grandfather, but for one year only.
  - Grandfather requests can be made through the Grandfather Transfer process (**new in November/December**). Grandfathered students will **not receive district transportation**.

# Grandfathering (cont.)

## High School Students

- Students who experience an assignment change as a result of this proposal:
  - From **an existing school to an existing school**, all current students in 9th, 10th and 11th grades are eligible to request a **transfer** to “grandfather” at their current assignment. These requests will be approved if submitted during the designated application period.
    - Siblings of eligible grandfather students will also have their transfer requests approved if submitted during the designated application period.
    - Students who request to grandfather are **transfer** students and **no transportation will be provided**.
  - From **existing school to a new school** Green Level High will open with grades 9 and 10 only for the 2019-20 school year. Any student rising into grades 11 or 12 living in the base attendance area of Green Level High will continue at their base high school with their current level of transportation. Students in grades 9 and 10 are not eligible to grandfather unless they have an 11<sup>th</sup> or 12<sup>th</sup> grade sibling.
    - Siblings of a rising 11<sup>th</sup> or 12<sup>th</sup> grader will be eligible to grandfather to the same school their sibling is assigned to if their transfer request is submitted during the designated application period.
    - Students who request to grandfather are **transfer** students. However, **transportation will be provided until the older sibling leaves the school or experiences an address change (whichever occurs first)**. After that point, transportation will no longer be provided.
- Grandfather requests can be made through the Grandfather Transfer process (new in November/December)

# Grandfathering (cont.)

## Elementary and Middle School Students Affected by Calendar Application School Changes

- Calendar Application students who experience an assignment change as a result of this enrollment proposal (calendar application school they are currently attending is no longer offered for their address), are eligible to request a **transfer** to “grandfather” at their current assignment. These requests will be approved if submitted during the designated application period.
- Grandfather requests can be made through the Grandfather Transfer process (**new in November/December**). Grandfathered students will **not receive district transportation**.
- Siblings of eligible grandfather students may grandfather and remain as transfer students at the school with no limit on the number of years they can attend the school.

# Enrollment Proposal Process

We strive to make this process collaborative and transparent.

## Draft 1 – Aug. 21

Website and address look-up tool launch. Feedback gathered online and at BAC meetings. Questions answered in FAQ document.

## Draft 2 – Sept. 18

Address look-up tool updated. Feedback gathered online and at **public information sessions the week of Sept. 24-28**. Questions answered in person and in FAQ document.

## Draft 3 – Oct. 30

Feedback gathered online and at **Nov. 7th public hearing**. Board Edits shared by staff during Nov. 7<sup>th</sup> Board Work Session.

## Vote – Nov. 20

The board will deliberate during the Nov. 7<sup>th</sup> meeting before the final vote.

# Information & Feedback

We will share timely information online and answer questions in FAQ documents. We provide opportunities for parent feedback online and at public meetings.



## Website

[wcpss.net/enrollmentproposal](http://wcpss.net/enrollmentproposal)



## Feedback

[wcpss.granicusideas.com](http://wcpss.granicusideas.com)



## Public Meetings

Will announce dates and locations soon.



## Public Hearing

Nov. 7 in the board room.

- Questions/Comments?